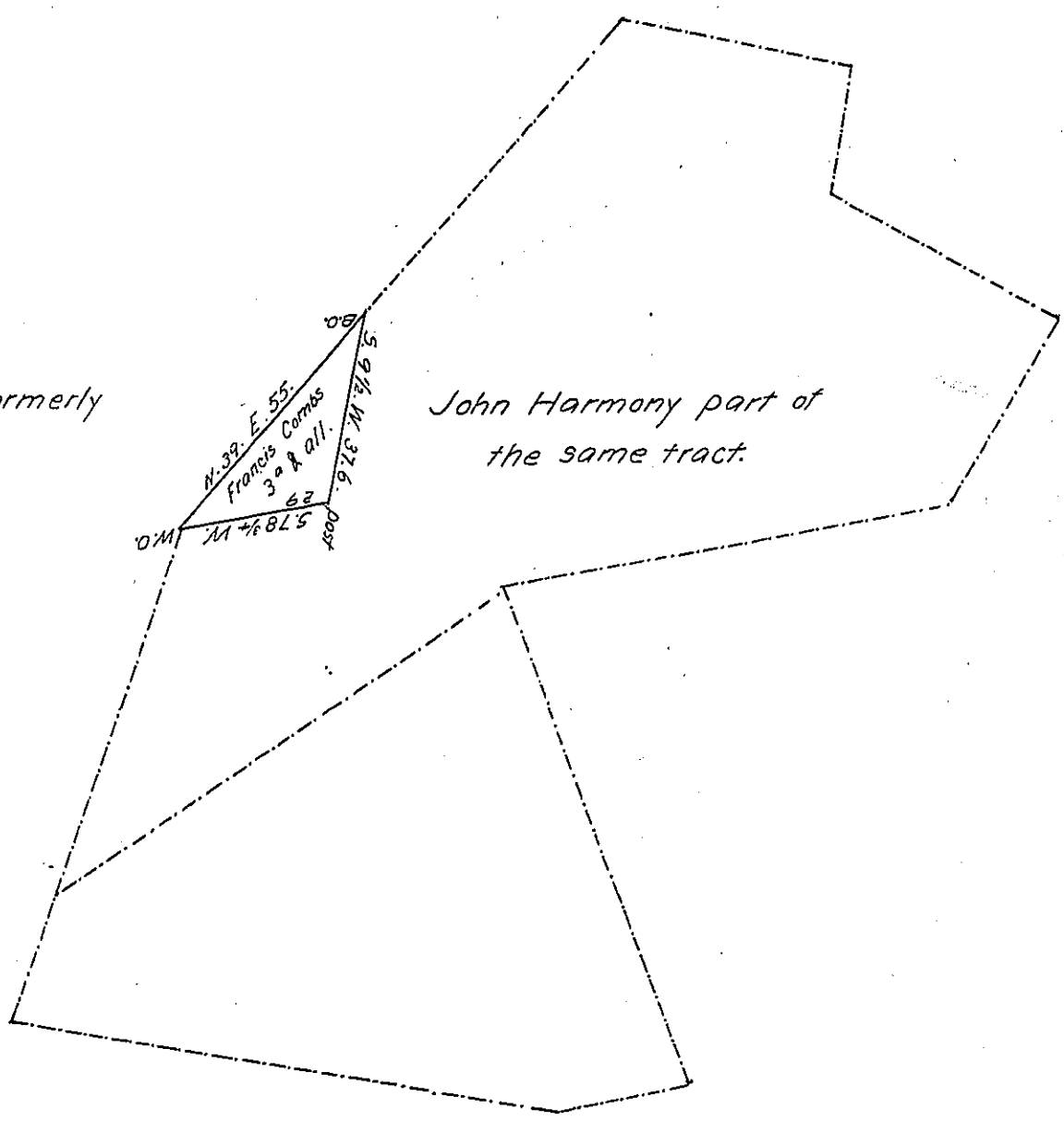


Henry Snyder formerly
Peter Snyder.

John Harmony part of
the same tract.



A Draft of a part of a tract of Land Situate in Guilford Township
Franklin County (formerly Cumberland County) Containing Three Acres &
allowance of Six P^t Cent for Roads &c. Being part of a tract of 103^a 105 ps. &
all. Surveyed in pursuance of an order of Survey Granted Andrew Trees
bearing date the 5th day of December 1766. No. 2093. Resurveyed and laid off
for Francis Combs the 4th day of March 1820.

Arch^d Fleming. D.S.

Jacob Spangler Esq^r }
Surveyor General. }

IN TESTIMONY that the above is a copy of the original remaining on file in
the Department of Internal Affairs of Pennsylvania, made
conformably to an Act of Assembly approved the 16th day of
February, 1833, I have hereunto set my Hand and caused
the Seal of said Department to be affixed at Harrisburg,
this Seventeenth day of December 1906.

Lea C. Brown
Secretary of Internal Affairs.